



CONNECTING  
LEARNING TO EMPLOYMENT

# SUCCESSFUL CAREER GUIDANCE PROGRAMS

*A Perspective on  
Deliverables*

&

*Implementation Methodology*

# Opportunity



## YOUTH - A FORCE FOR SOCIAL & ECONOMIC PROGRESS

Today's youth cohort can be seen as a resource, an asset, a force for economic and social progress and transformation. *But such economic change depends on how well countries create an enabling environment for growth.* More importantly, on how well they create conditions for young people to make a safe and healthy transition from adolescence to adulthood, acquire the skills they need to find good jobs and succeed in a dynamic economy, enjoy their rights and realize their full potential.

UNITED NATIONS

# Problem

---



## MISMATCH

BETWEEN LEARNING CHOICES & WORK OPPORTUNITIES

EDUCATED  
UNEMPLOYMENT

“EDUCATION IS INADEQUATELY  
TAILORED TO THE NEEDS OF THE  
LABOR MARKET LEADING TO  
INCREASE IN EDUCATED  
UNEMPLOYED.”

WORLD ECONOMIC FORUM

EDUCATED  
UNDEREMPLOYMENT

“YOUTH UNDEREMPLOYED  
BECAUSE THEY ARE NOT  
INVOLVED IN JOBS THAT ARE IN  
LINE WITH THEIR  
QUALIFICATION.”

WORLD ECONOMIC FORUM

---

UNEMPLOYMENT &  
UNDEREMPLOYMENT

---

GLOBAL RISK

# SO WHAT WORKS?

Our Findings- From Research & Practice

# Institutionalizing

---

Career Guidance and Skills Development Program

# Our research reveals 4 Pillars of a Successful Transition



## AWARENESS

“Youth need access to good quality information to make well informed choices about education and career pathways.”

OECD

## EXPOSURE

“Exposure to the world of work while still in the education is beneficial for all young people across all pathways.”

UNITED NATIONS



## PARTICIPATION

“Youth need to be welcomed as full partners in claiming their rights. Their participation is a right in itself.”

OECD

## CONNECTIONS

“Addressing the persistent skills mismatch requires strengthening the channels of communication between education and work.”

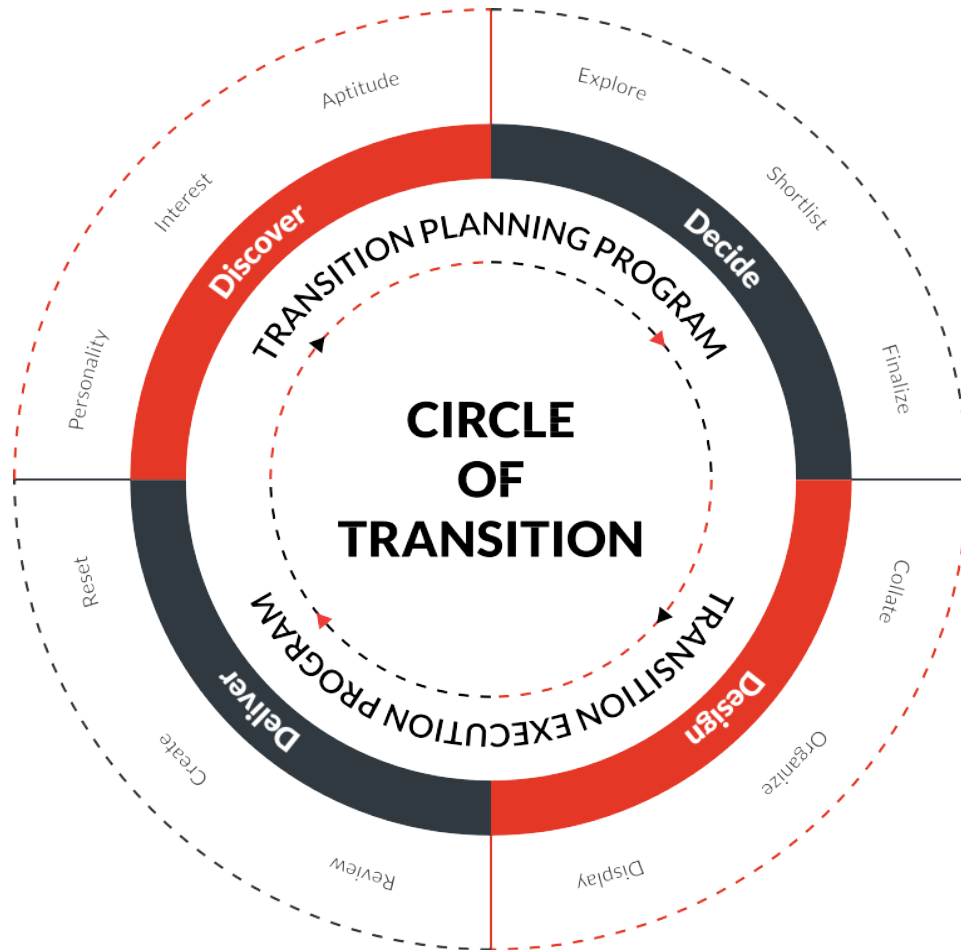
WORLD ECONOMIC FORUM

# HOW WE DESIGNED A SOLUTION ON 4 PILLARS

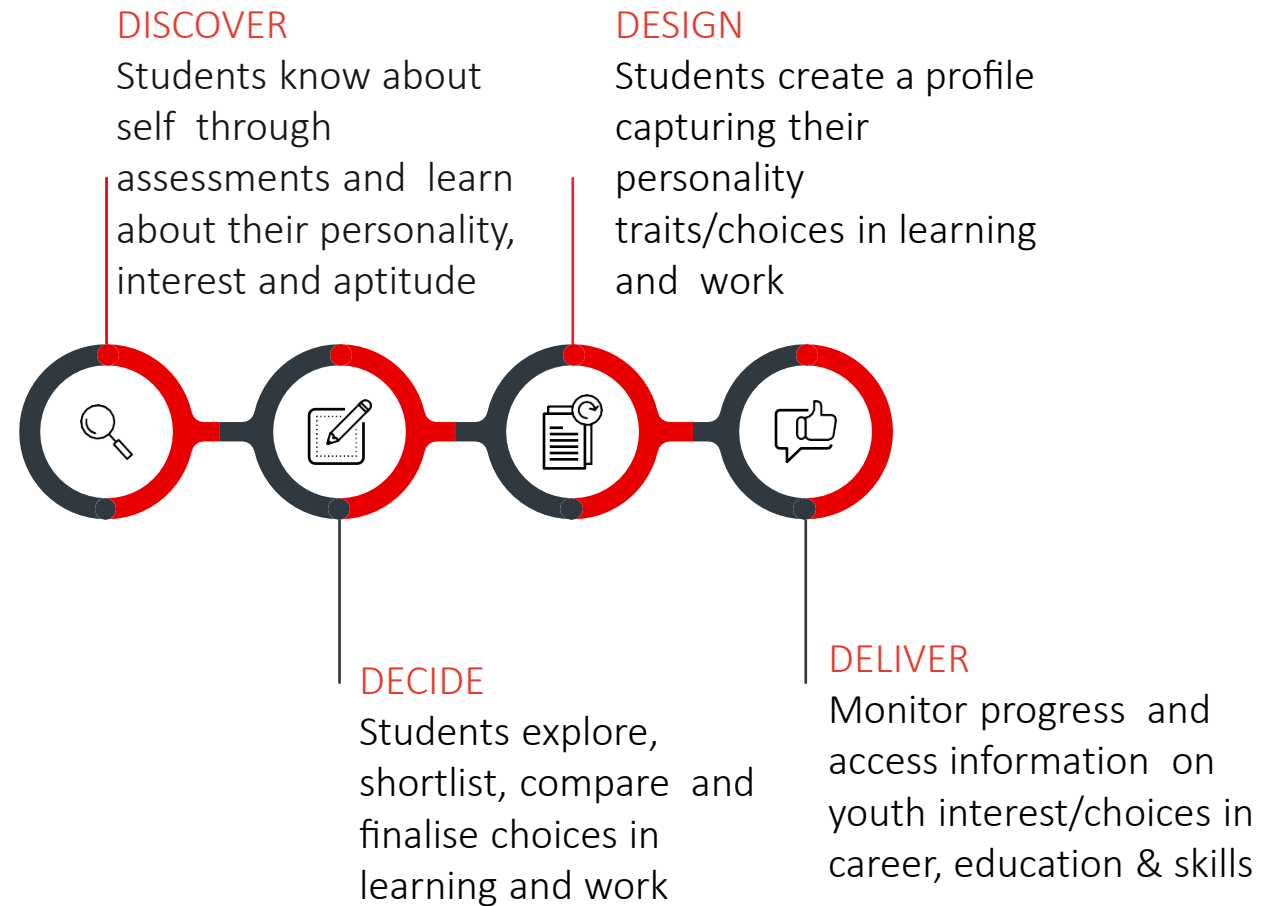
Awareness | Exposure | Participation | Connections



# Process based design – to deliver on 4 pillars of transition



2 PROGRAMS 4 MODULES 12 STEPS



# Steps defined

## DISCOVER

### PERSONALITY

Enables a user to take personality assessment that highlights their key personality traits and how they relate to different work areas.

### INTERESTS

Enables a user to take career interest assessment that highlights the fields of work that align with their education, interests and skills.

### APTITUDE

Enables a user to take assessment to know their current readiness and effort that may be required to pursue their career interests.

## DECIDE

### EXPLORE

Enables a user to know about options in career + education (including companies and colleges) to make informed choices.

### SHORTLIST

Enables a user to add options in career and education to their shortlist bucket while the process of exploration continues.

### FINALIZE

Enables a user to compare options and generate a comparison dashboard that makes it easy to finalize.

## DESIGN

### COLLATE

Enables a user to collate the results from all activities in different modules on one dashboard for easy reference.

### ORGANIZE

Enables a user to organize the information about self along with interests and choices in career, education, skills and sports.

### IMPLEMENT PASSION PLAN

Enables a user to design a shareable / downloadable professional CV / Resume for education, employment, internship or any other opportunity.

## DELIVER

### PROGRESS

Enables government to monitor progress in real time and introduce interventions to meet timelines.

### STATISTICS

Enables government to access statistics related to students usage, progress and results of all the activities on the platform.

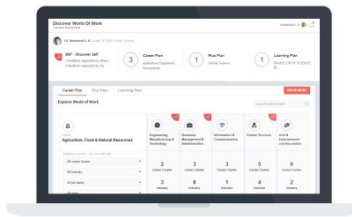
### REPORTS

Enables government to download reports using various filters. The filters could be customized to the need of the government.

# Dashboards

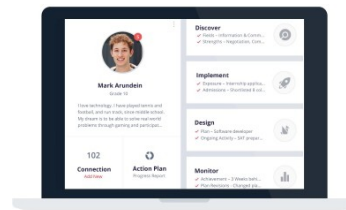
## 01. INDIVIDUAL

A series of reports capturing transition journey since the signup.



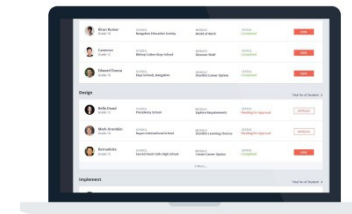
## 02. COUNSELLOR

A dashboard capturing progress and results of students assigned to the counsellor.



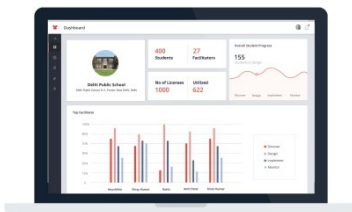
## 03. INSTITUTION

A dashboard capturing progress and results of activities of all students of the school.



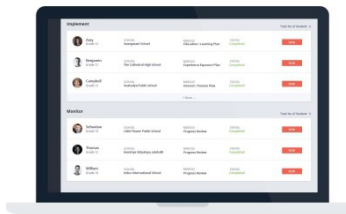
## 04. ADMINISTRATION

A dashboard capturing progress and results of all schools in the region.



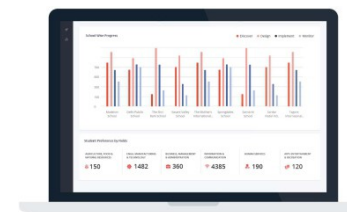
## 05. DISTRICT / STATE

A dashboard capturing progress / results filtered by region, student age, education and interests.



## 06. COUNTRY

A dashboard capturing progress and results filtered by states, student age, education and interests.



WHAT WERE THE EXPECTATIONS

# What are students looking for from such a program?

- Discovering their strengths & interests
- Knowledge about Future World of Work
- Connecting their academic learning with work
- Information about world of learning
- Process of goal setting
- Power of Networking
- Future skills Development (Complex Thinking, Communication, Teamwork)

# What are stakeholders looking for from such a program?

- Knowing about youth talents, interests and choices
- Ability to introduce the program through technology
- Ability to monitor the progress
- Ability to access the results of the activities
- Ability to connect youth talents, interests and choices with opportunities
- Ability to scale at speed

HOW DID WE DELIVER OUR SOLUTION

# Delivering the program

Using a process-based career education  
& skills development platform

## FOR STUDENTS

Enhanced self and career awareness + process based approach for informed decision making in career & education

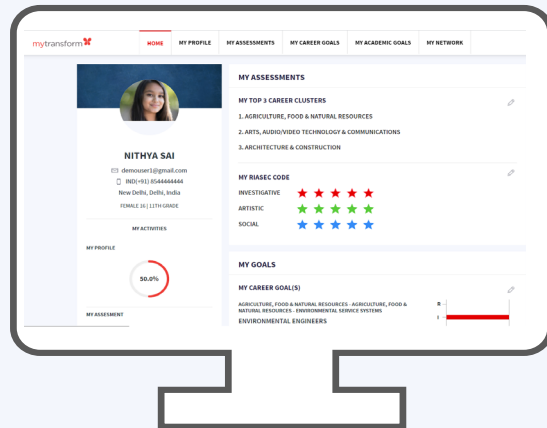
## FOR STAKEHOLDERS

Dynamic access to youth choices in career & education for youth-centered decisions in education, skilling and employment.

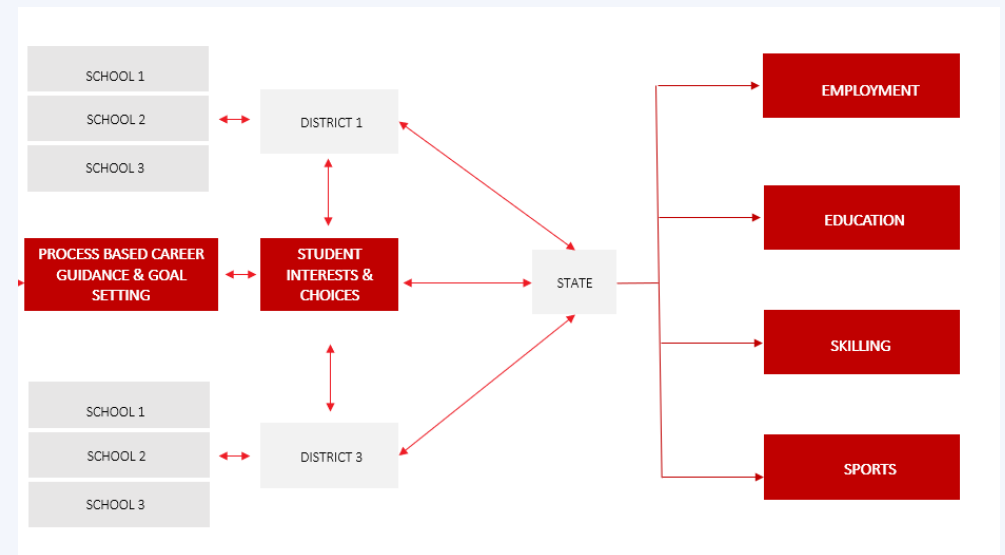


# How do we do it- A fusion of technology with execution

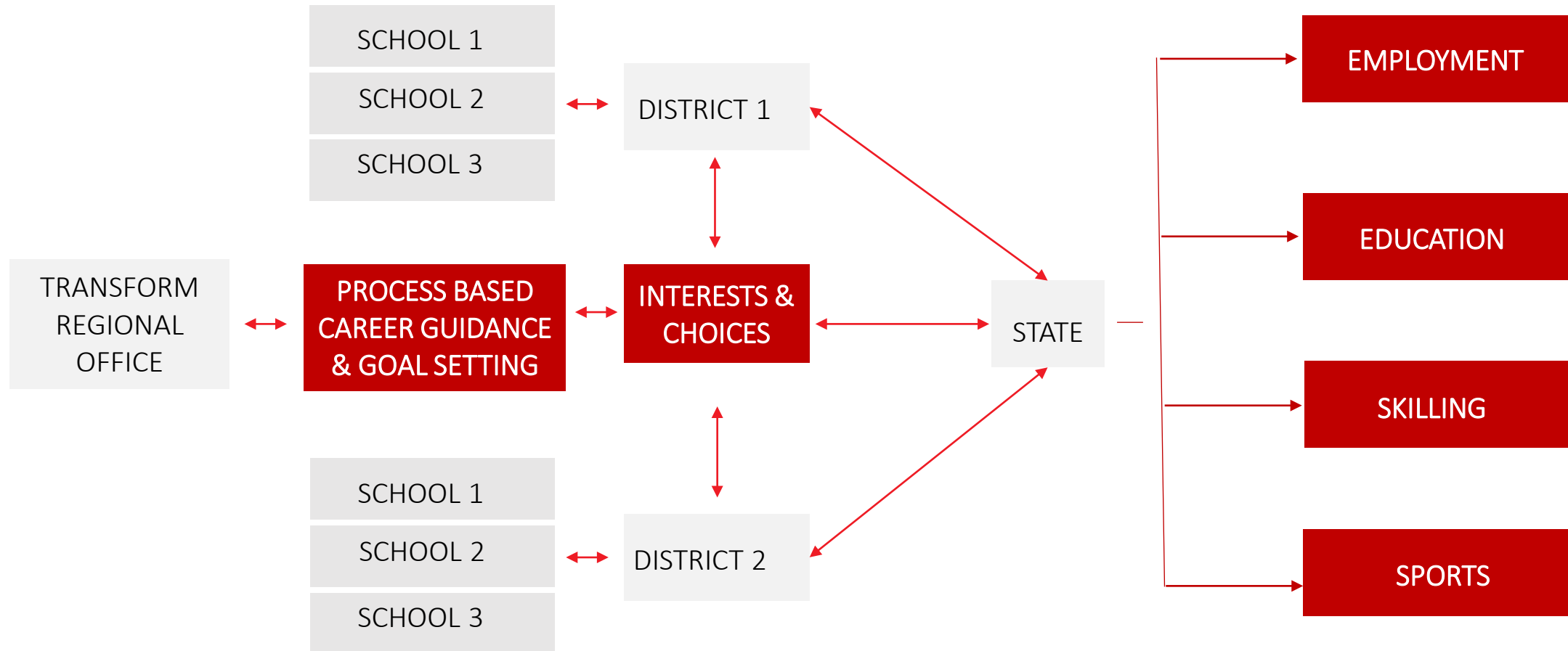
STANDARDIZED, SCALABLE,  
CLOUD BASED  
CAREER EDUCATION & ANALYTICS  
PLATFORM



TRAINING & IMPLEMENTATION  
STUDENTS, SCHOOL/COLLEGE,  
DISTRICT/STATE/COUNTRY  
LEVEL



# The Implementation Framework



# Outcomes - Student

## OUTCOMES

- ✓ Career interest mapping
- ✓ World of work exploration and career goal setting
- ✓ World of learning exploration and academic goal setting
- ✓ Career networking
- ✓ Resume creation

## STUDENT DASHBOARD

**HOME** MY PROFILE MY ASSESSMENTS MY CAREER GOALS MY ACADEMIC GOALS MY NETWORK

STUDENT POOJA SHARMA

**POOJA SHARMA**  
pooja.sharmademo@gmail.com  
IND(+91) 9818829498  
New Delhi, Delhi, India  
FEMALE 23 | BACHELOR

**MY ASSESSMENTS**

**MY TOP 3 CAREER CLUSTERS**

1. MANUFACTURING
2. SCIENCE, TECHNOLOGY, ENGINEERING & MATHEMATICS
3. ARCHITECTURE & CONSTRUCTION

**MY RIASEC CODE**

INVESTIGATIVE ★★★★★  
ARTISTIC ★★★★★  
CONVENTIONAL ★★★★★

**MY GOALS**

**MY CAREER GOAL(S)**

BUSINESS, MANAGEMENT & ADMINISTRATION - MARKETING - MARKETING MANAGEMENT  
ADVERTISING AND PROMOTIONS MANAGERS  
© AEC

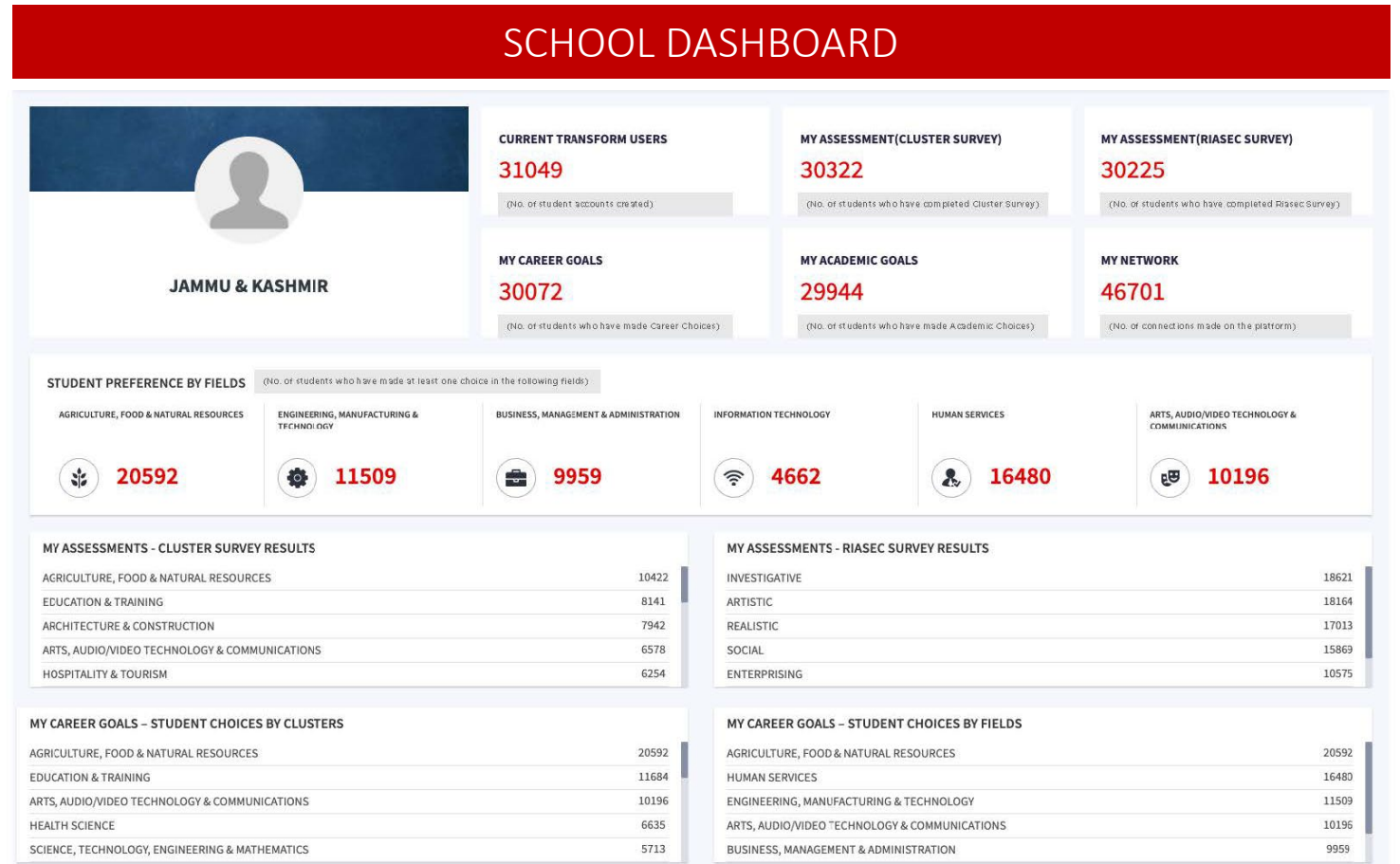
BUSINESS, MANAGEMENT & ADMINISTRATION - FINANCE - BUSINESS FINANCE  
FINANCIAL ANALYSTS

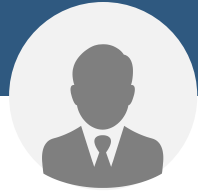
**PEOPLE YOU MAY KNOW**

- ANKUSH - ARMY PUBLIC SCHOOL CANTT
- ARYAN . ARMY PUBLIC SCHOOL CANTT
- AURSHDEEP SINGH ARMY PUBLIC SCHOOL CANTT
- CHAHATESH SAINI ARMY PUBLIC SCHOOL CANTT
- DHIRAJ WAGH ARMY PUBLIC SCHOOL CANTT

# Outcomes - Schools

- ✓ Platform usage
- ✓ Progress on the platform
- ✓ Youth personality / career interests
- ✓ Career Interests / Goals
- ✓ Academic Interests / Goals





MYTRANSFORM ADMIN

CURRENT TRANSFORM USERS

73040

CURRENT TRANSFORM USERS

73040

CURRENT TRANSFORM USERS

73040

MY CAREER GOALS

73040

MY CAREER GOALS

73040

MY CAREER GOALS

73040

STUDENT PREFERENCE BY FIELDS

CURRENT TRANSFORM USERS

19528

CURRENT TRANSFORM USERS

19528

CURRENT TRANSFORM USERS

19528

CURRENT TRANSFORM USERS

19528

CURRENT TRANSFORM USERS

19528

CURRENT TRANSFORM USERS

19528

**CLUSTER SURVEY RESULTS**

AGRICULTURE, FOOD & NATURAL RESOURCES	10766
EDUCATION & TRAINING	8942
ARCHITECTURE & CONSTRUCTION	8237
ARTS, AUDIO/VIDEO TECHNOLOGY & COMMUNICATIONS	6876
HOSPITALITY & TOURISM	6442

**RIASEC PERSONALITY ASSESSMENT RESULTS**

REALISTIC	10321
INVESTIGATIVE	6008
ARTISTIC	12234
SOCIAL	9876
ENTERPRISING	8442

**MY CAREER GOALS**

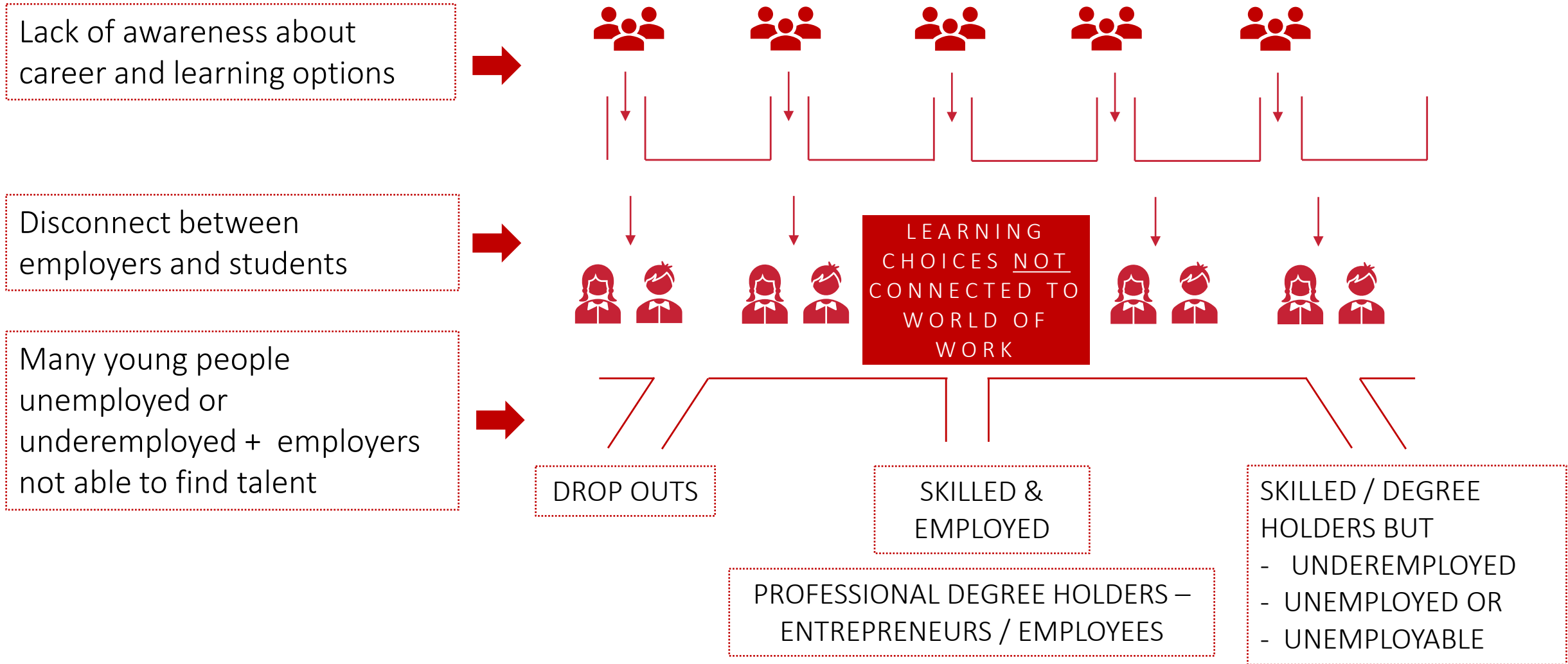
AGRICULTURE, FOOD & NATURAL RESOURCES	10699
EDUCATION & TRAINING	7988
ARCHITECTURE & CONSTRUCTION	8556
ARTS, AUDIO/VIDEO TECHNOLOGY & COMMUNICATIONS	9100
HOSPITALITY & TOURISM	12034

**MY ACADEMC GOALS**

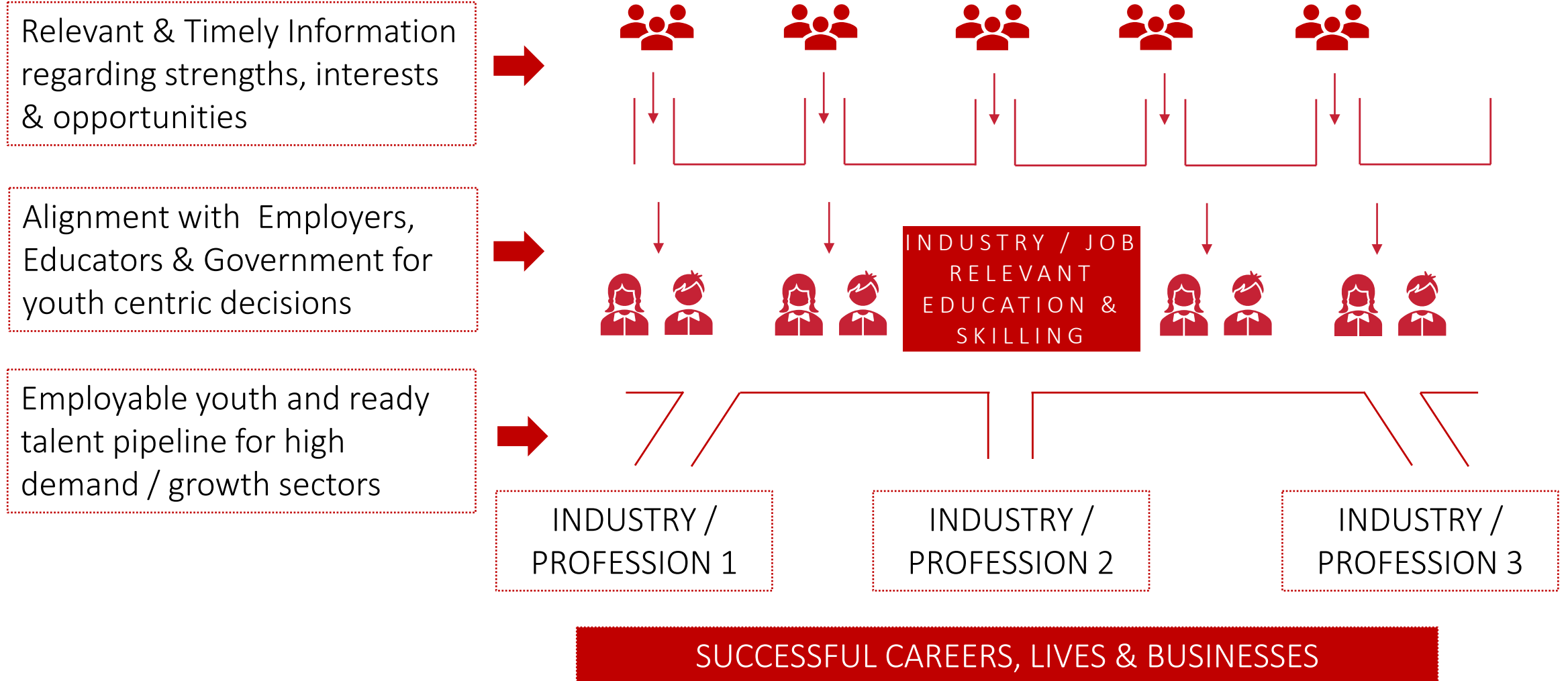
AGRICULTURE, FOOD & NATURAL RESOURCES	10998
EDUCATION & TRAINING	8345
ARCHITECTURE & CONSTRUCTION	8255
ARTS, AUDIO/VIDEO TECHNOLOGY & COMMUNICATIONS	9988
HOSPITALITY & TOURISM	11344

HOW WOULD IT IMPACT  
SCHOOL TO WORK TRANSITION

# Pre-intervention



# Post-intervention





WHAT WERE THE  
CRITICAL SUCCESS FACTORS

# Critical Success Factors of Program Implementation

---

**CERTIFIED PLATFORM** - Bringing a process-based approach for exploration and decision making for students with advanced monitoring and analytics tools for government

**TEAM MOBILIZATION** - Bringing together team Transform, Counsellors, Student Champions, School Principals, Representatives & Administration for a successful implementation

**TECHNOLOGY ENABLEMENT & CAPACITY ENHANCEMENT** – Student, Counsellors, Principals, Administration accounts creation, Mobile app, Server enhancement

**TRAINING + ENGAGEMENT** - Training videos, creatives & webinar training sessions for students + Training, tool kits and progress monitoring support to counsellors and administrators

**PROJECT MONITORING + PROGRESS REPORTING** - Daily dashboards & progress status reporting including exception reports

**CUSTOMER SUPPORT FROM COUNSELLING & TECHNICAL STAFF** - Continuous support extended to students, counsellors and principals

1:10

STUDENT  
CHAMPION/STUDENTS

2:250

SCHOOL  
REP+PRINCIPAL/STUDENTS

MOBILISATION

1:1000

COUNSELLOR/STUDENTS

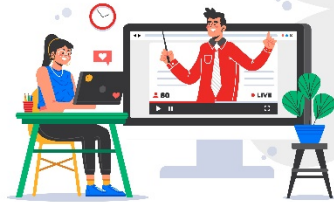
1:1

TRAINING TEAM/DISTRICT

# Training of Students and Teachers

**TODAY'S TRAINING SESSION  
WILL ALSO BE  
LIVE ON FACEBOOK.**

PLEASE CLICK THE LINK  
BELOW TO WATCH  
**FACEBOOK  
LIVE BROADCAST.**



**ALL MODULES  
TRAINING SESSION**

BY  
TRANSFORM FOUNDATION

**TUESDAY, 1<sup>ST</sup> DECEMBER**

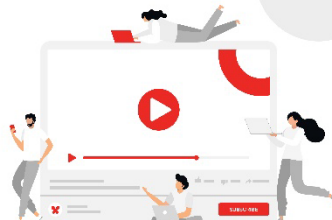
- 1 2:00PM TO 3:00PM
- 2 7:00PM TO 8:00PM

**THURSDAY, 3<sup>RD</sup> DECEMBER**

- 1 2:00PM TO 3:00PM
- 2 7:00PM TO 8:00PM

**SATURDAY, 5<sup>TH</sup> DECEMBER**

- 1 2:00PM TO 3:00PM
- 2 7:00PM TO 8:00PM



**ADDITIONAL SESSION**

for  
**HOIs and Faculty Counsellors**

of

**UDHAMPUR**

on

**THURSDAY, 22<sup>ND</sup> OCT 2020**

**AT 11:00 am**

by

**Transform Foundation**

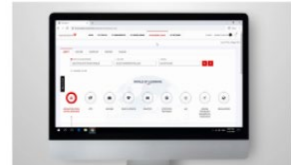


Transform

Transform

**MODULE 3 i.e. MY ACADEMIC GOALS**

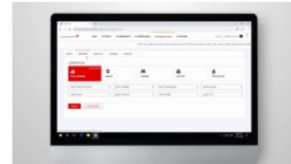
**STEP 1:** Click on MY ACADEMIC GOALS tab given on the top panel of home page.  
(Faculty counsellor/Career Mentor should explain the importance of this module to the students)



Under this 5 tabs are given: About, Explore, Shortlist, Compare, Finalise.

**STEP 2:** ABOUT Tab - This section gives an understanding of various academic options available in the **WORLD OF LEARNING** in the field of Arts, Business, Agriculture, Engineering and more. Click on each field of study to know all the options to make a well-informed choice.



**STEP 3:** Click on **EXPLORE** - Search the colleges that offer courses an individual would like to pursue or be interested in. Shortlist those colleges.



TRAINING SESSIONS

TOOL KITS

# Motivation & Engagement



**Do you know**  
Which career types are aligned with

- The activities that you like
- Your favorite subjects
- Your personal qualities



[www.mytransform.com](http://www.mytransform.com)

**Leading to self-sufficient & skillful youth!**



[www.mytransform.com](http://www.mytransform.com)


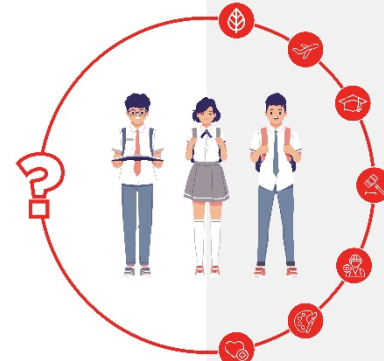
**Enhanced career choices**



[www.mytransform.com](http://www.mytransform.com)

**1000+** career options but only 16 career clusters to choose from

Take your clusters survey to know your best options



[www.mytransform.com](http://www.mytransform.com)

INFORMATIVE CREATIVES & EXPLAINER VIDEOS

1

UNION TERRITORY  
DASHBOARD

2

DISTRICT  
DASHBOARDS

227 SCHOOL  
DASHBOARDS

29

COUNSELLOR  
DASHBOARDS

100+

PROGRESS / EXCEPTION  
REPORTS

Monitoring & Support

OUTCOMES

>96%

COMPLETION

59000+

ASSESSMENTS

8-10 CAREER / ACADEMIC  
CHOICES PER STUDENT

2,36,000+

CAREER CHOICES

2,90,000+

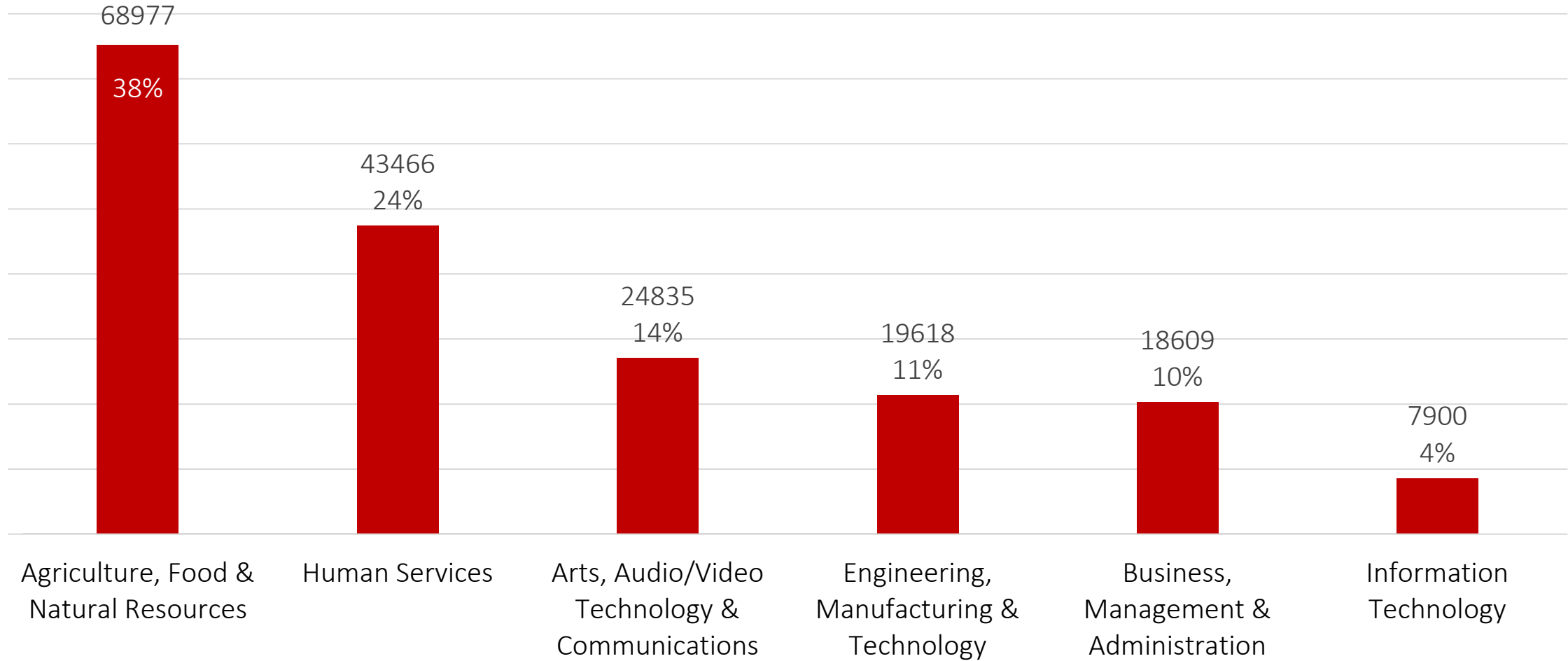
ACADEMIC CHOICES

Counselling Outcomes



# Career Choices

---



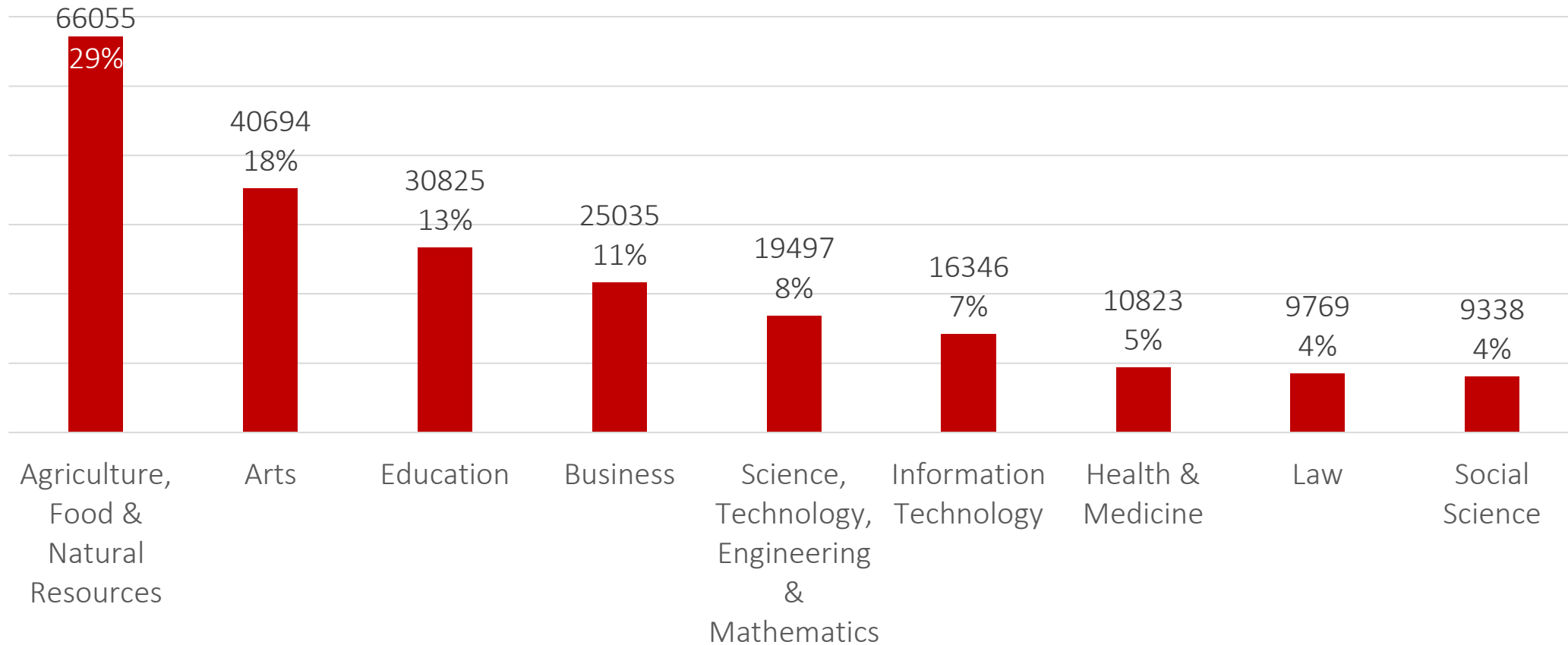
---

>1,83,000+ CHOICES

---

# Academic Choices

---



---

>2,31,194+ CHOICES

---

# Qualitative outcomes

---

## DIRECT OUTCOMES

- Enhanced awareness of the world of work
- Enhanced career decision making skills
- Ability to link subjects studied in school with skills needed in work life
- Ability to communicate the interests with the stakeholders (educators & government)

## INDIRECT OUTCOMES

- Positive attitude towards work and working life
- Enhanced curiosity and interests
- Practicing to use information independently and interactively
- Practicing to use technology for exploration and decision making

THANK YOU!